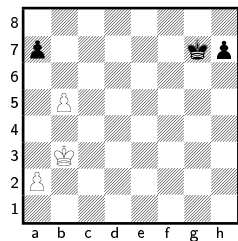
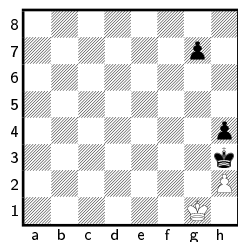


Contagem dos lances



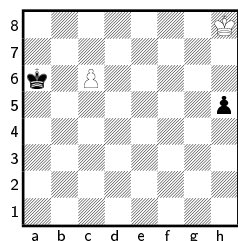
Quem será o vencedor?

Ter um tempo é importante



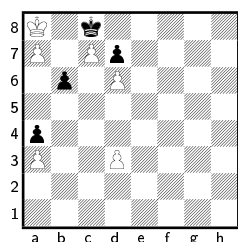
As negras jogam.

Geometria do tabuleiro



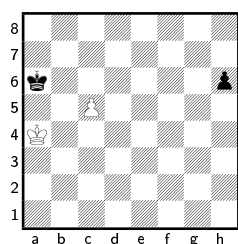
As brancas jogam e empatam.

Zugzwang



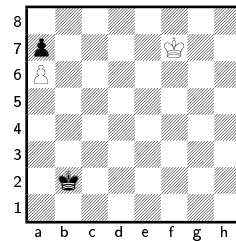
As brancas jogam.

A regra do quadrado vale sempre?



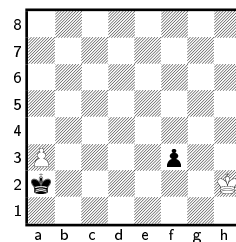
As brancas jogam. Será que as negras conseguem ganhar?

Uma composição



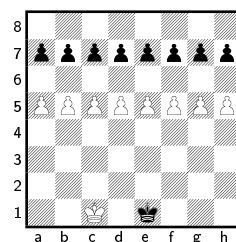
As brancas ganham

A idéia de Reti, mas ...



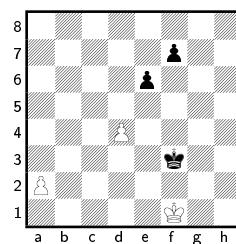
As brancas jogam e ganham.

Peão passado.



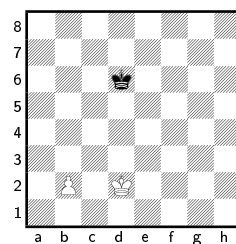
As brancas jogam

Bianchetti, 1925



As brancas jogam e ganham

Oposição clássica



Jogam as negras e empatam

Solutions

Contagem dos lances

Quem joga primeiro vence.

Ter um tempo é importante

1...g6!

Geometria do tabuleiro

1.♟g7

Zugzwang

Todos os lances são únicos.

A regra do quadrado vale sempre?

1. c6 ou 1.♟b4 empata.

Uma composição

1.♟e6

A idéia de Reti, mas ...

1. a4 Kb3 2. a5 Kc3 3. Kg1 Kd4 4. a6 Ke3 5. Kf1

Peão passado.

1. e6

Bianchetti, 1925

1.d5

Oposição clássica

1. ♟c6