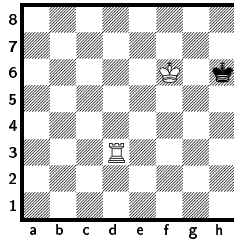
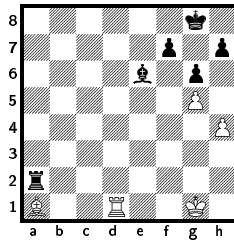


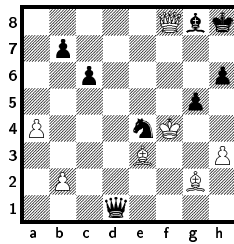
# Exemplos de Mate em 1 lance



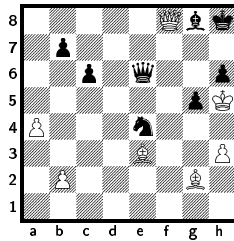
As brancas jogam.



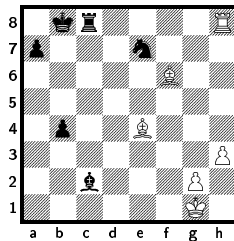
As brancas jogam



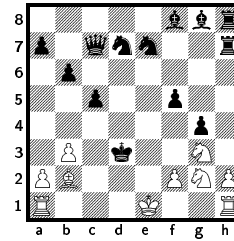
O que acontece se as brancas jogam 1. ♖×e4?



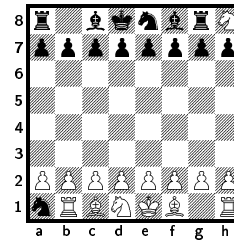
As negras jogam



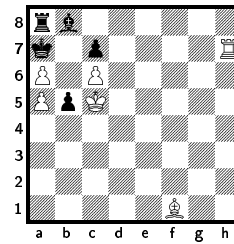
Brancas jogam



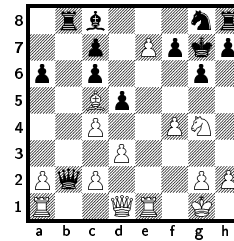
Jogam as brancas



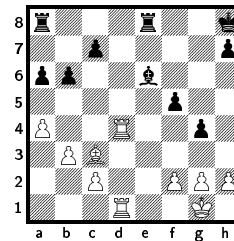
Mate no próximo. Quem dá mate?



Jogam as brancas



Brancas jogam



Mate em 1

## Soluções

### Um simples

1. ♖h3#

### Parecido

1. ♖d8#

### O rei no centro

1... Dd5#

### Nem sempre a dama dá mate.

1... ♗g3#

### Par de bispos

1. ♗e5#

### Composição

1.0-0-0#

### Composição 2

1... ♗c2#

### Colaboração das peças

1.a×b6#

### Mais mate em 1

1.e8♗#

### Uma situação comum

1. ♖×g4#