

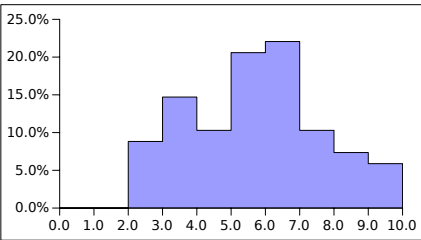
Histogramas

Primeira Prova

Turma 3

Histogram

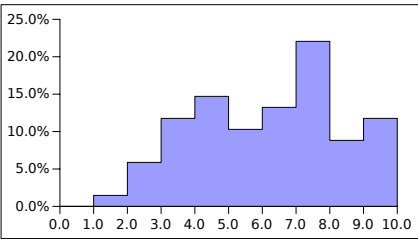
			Column 1
above 0	up to 1		0.0%
above 1	up to 2		0.0%
above 2	up to 3		8.8%
above 3	up to 4		14.7%
above 4	up to 5		10.3%
above 5	up to 6		20.6%
above 6	up to 7		22.1%
above 7	up to 8		10.3%
above 8	up to 9		7.4%
above 9	up to 10		5.9%



Tuma 4

Histogram

			Column 1
above 0	up to 1	0.0%	
above 1	up to 2	1.5%	
above 2	up to 3	5.9%	
above 3	up to 4	11.8%	
above 4	up to 5	14.7%	
above 5	up to 6	10.3%	
above 6	up to 7	13.2%	
above 7	up to 8	22.1%	
above 8	up to 9	8.8%	
above 9	up to 10	11.8%	

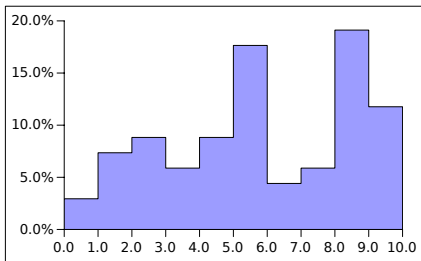


Segunda Prova

Turma 3

Histogram

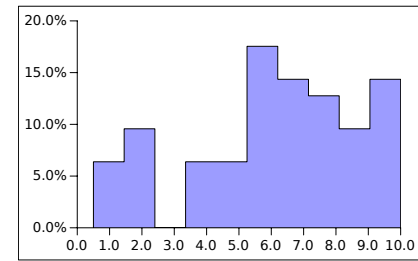
			Column 1
from 0	to below 1	2.9%	
from 1	to below 2	7.4%	
from 2	to below 3	8.8%	
from 3	to below 4	5.9%	
from 4	to below 5	8.8%	
from 5	to below 6	17.6%	
from 6	to below 7	4.4%	
from 7	to below 8	5.9%	
from 8	to below 9	19.1%	
from 9	to below 10	11.8%	



Tuma 4

Histogram

from 0.5	to below 1.45	6.1%
from 1.45	to below 2.4	9.1%
from 2.4	to below 3.35	0.0%
from 3.35	to below 4.3	6.1%
from 4.3	to below 5.25	6.1%
from 5.25	to below 6.2	16.7%
from 6.2	to below 7.15	13.6%
from 7.15	to below 8.1	12.1%
from 8.1	to below 9.05	9.1%
from 9.05	to below 10	13.6%

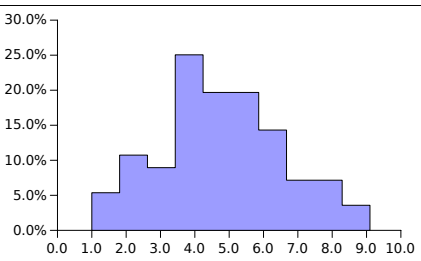


Terceira Prova

Turma 3

Histogram

			Column 1
from	1	to below 1.81	4.3%
from	1.81	to below 2.62	8.7%
from	2.62	to below 3.43	7.2%
from	3.43	to below 4.24	20.3%
from	4.24	to below 5.05	15.9%
from	5.05	to below 5.86	15.9%
from	5.86	to below 6.67	11.6%
from	6.67	to below 7.48	5.8%
from	7.48	to below 8.29	5.8%
from	8.29	to below 9.1	2.9%



Tuma 4

Histogram

from 0.1	to below 0.99	3.2%
from 0.99	to below 1.88	3.2%
from 1.88	to below 2.77	4.8%
from 2.77	to below 3.66	15.9%
from 3.66	to below 4.55	15.9%
from 4.55	to below 5.44	11.1%
from 5.44	to below 6.33	12.7%
from 6.33	to below 7.22	15.9%
from 7.22	to below 8.11	12.7%
from 8.11	to below 9	3.2%

